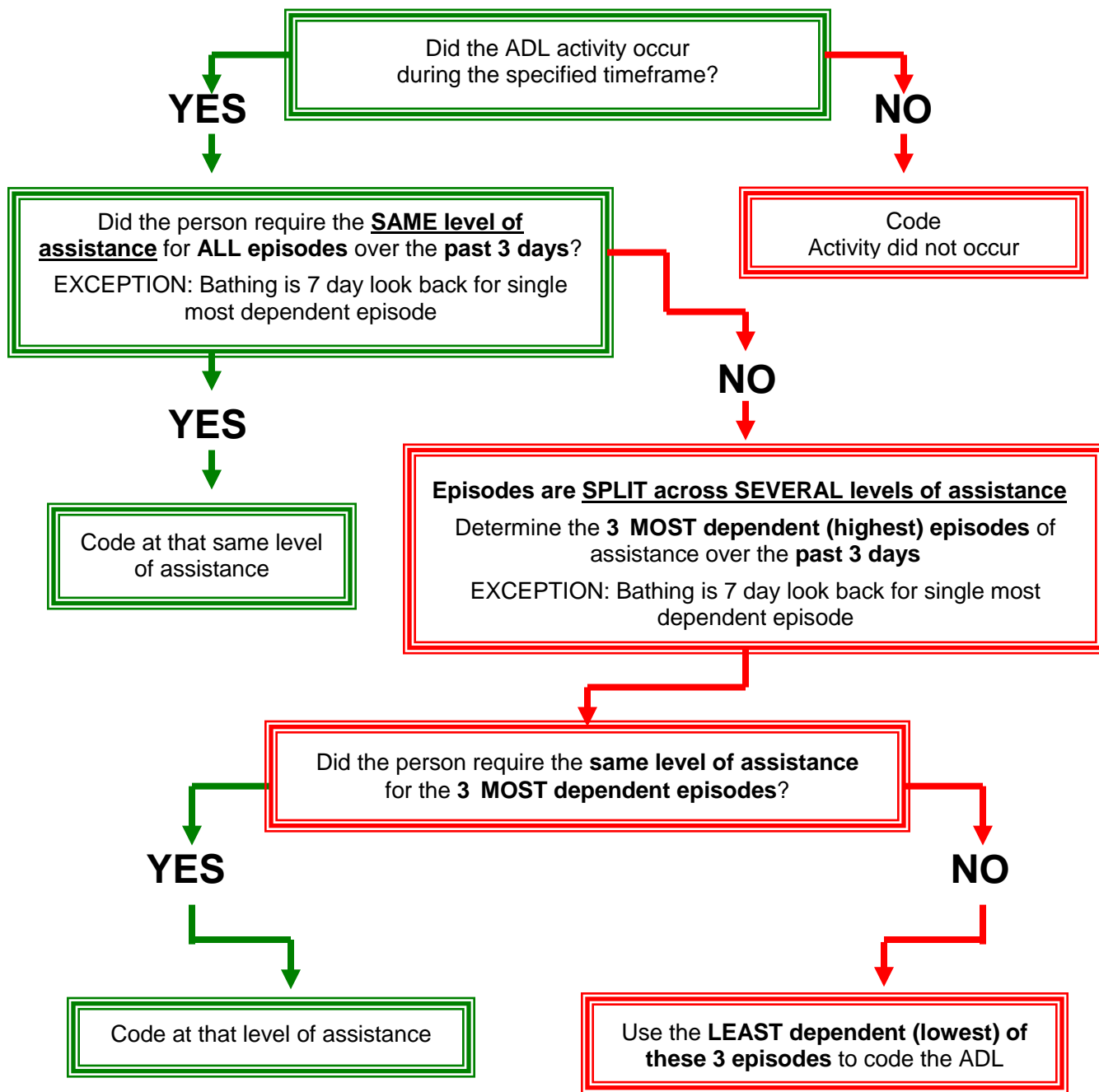


# Hospital EARC: ADL CODING DECISION TREE



## DEFINITIONS

1. ADL – Activity(ies) of Daily Living
2. EARC – Enhanced At-Risk Criteria Screening Tool
3. **Episode** – The number of times activity occurred during the specified look back timeframe.
4. **Level of Assistance** – The degree of oversight or physical support a person required to complete an ADL task (including subtasks). **Measure performance not capacity** meaning score person's actual level of involvement for each ADL based on what the person actually did, not what he/she may be capable of doing for self. ADL self-performance scores range from independent through total dependence; includes a category for activity did not occur.